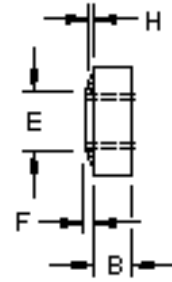
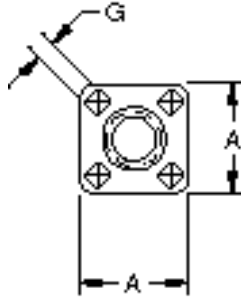


Square Weld Nut - Piloted - 4 Projections: WP 1101



| | |
|---------------------|--|
| Thread Size | #6-32 |
| Width (in) | 7/16 |
| Thickness (in) | 0.111 |
| Pilot Height (in) | 0.046 |
| Pilot Diameter (in) | 0.183 |
| A (in) | 0.438 |
| Tol A (in) | +0.000 / -0.015 |
| B (in) | 0.111 |
| Tol B (in) | +0.005 / -0.005 |
| E (in) | 0.183 |
| Tol E (in) | +0.005 / -0.005 |
| F (in) | 0.046 |
| Tol F (in) | +0.002 / -0.006 |
| G (in) | 0.078 |
| Tol G (in) | +0.005 / -0.005 |
| H (in) | 0.025 |
| Tol H (in) | +0.002 / -0.002 |
| Material | C1010 High-Welding Quality, Low Carbon Steel |
| Finish | Plain, Unless Specified |
| Threads | Unified Standard Class 2B ASME B 1.1-2003 |